



MONTHLY MEMBERSHIP PROGRESS REPORT

District 19 D

Results as of: 04/30/2019

GMT: GORDON ZIEGLER

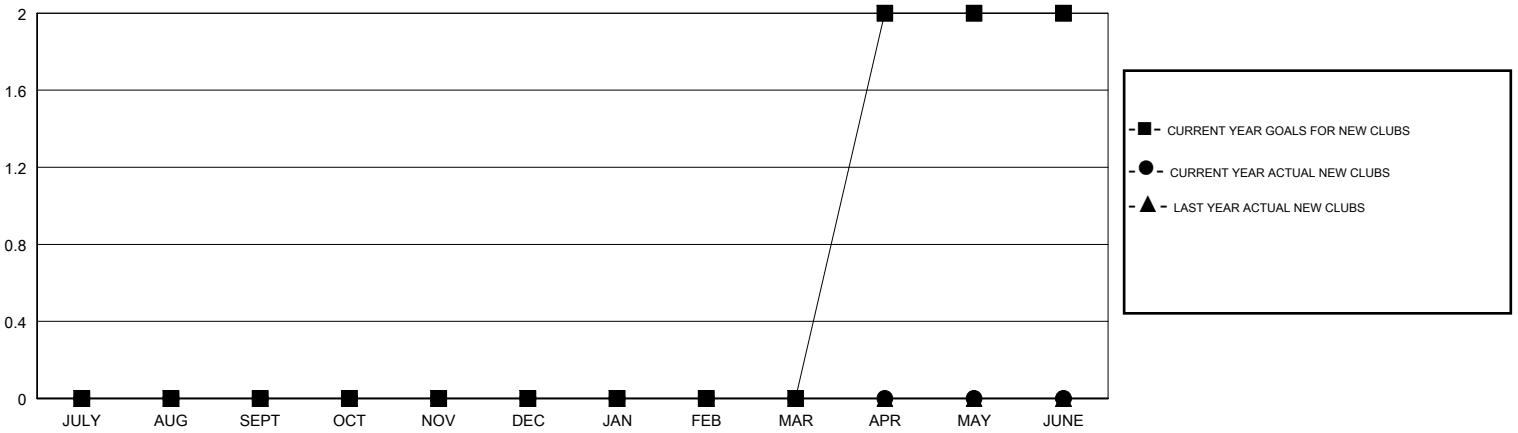
LOCATION WASHINGTON

GMT CA

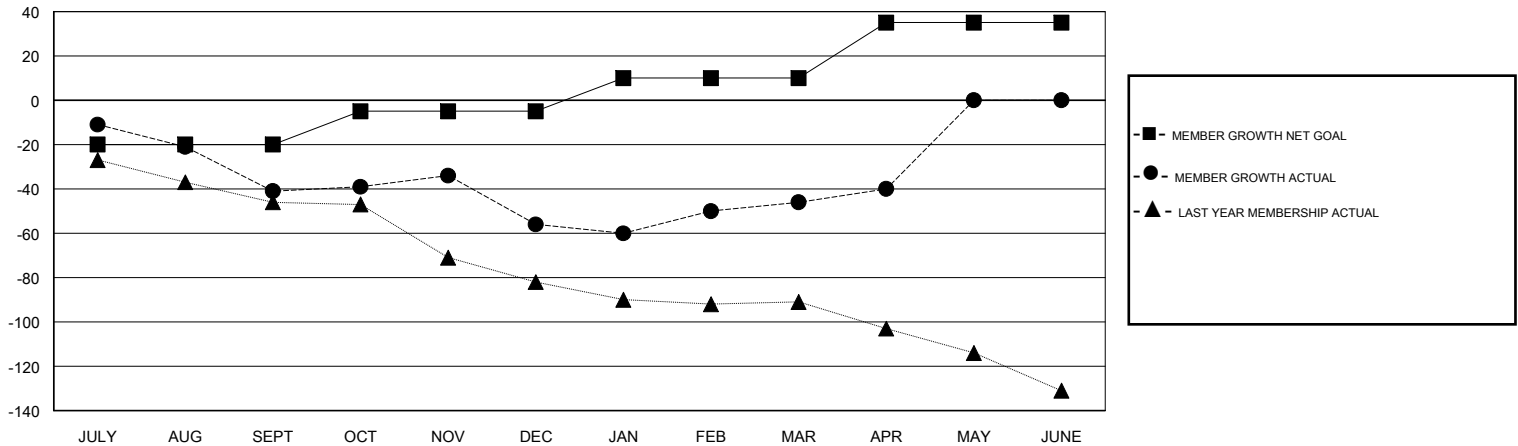
| Clubs | | | |
|-----------------------|---------------|-----------|---------------|
| RESULTS FOR 2018-2019 | | | |
| QUARTER | NEW CLUB GOAL | NEW CLUBS | DROPPED CLUBS |
| JULY/AUG/SEPT | 0 | 0 | 0 |
| OCT/NOV/DEC | 0 | 0 | 2 |
| JAN/FEB/MAR | 0 | 0 | 0 |
| APR/MAY/JUNE | 2 | 0 | 0 |

| Members | | | |
|-----------------------|------------------------|----------------------|--|
| RESULTS FOR 2018-2019 | | | |
| QUARTER | MEMBER GROWTH NET GOAL | MEMBER GROWTH ACTUAL | DROPPED MEMBERS ACTUAL (including transfers) |
| JULY/AUG/SEPT | -20 | 14 | 53 |
| OCT/NOV/DEC | 15 | 28 | 42 |
| JAN/FEB/MAR | 15 | 40 | 28 |
| APR/MAY/JUNE | 25 | 12 | 6 |

GOALS AND ACTUAL NEW CLUBS CUMULATIVE



GOALS AND ACTUAL MEMBERS CUMULATIVE



| | | |
|---|---|--|
| DROPPED CLUBS: 2 | 29 CLUBS OF 47 ADDED 1 OR MORE NEW MEMBERS | <u>GENDER DISTRIBUTION</u> MALE 658 (55.95%) FEMALE 518 (44.05%) Women Percentage Fiscal Year Goal: 45% |
| <u>DROPPED MEMBERS</u> DECEASED 11 CLUB CANCELLED 2 OTHER 116 TOTAL 129 | CLICK HERE FOR CUMULATIVE MEMBERSHIP DATA | TOTAL FAMILY UNIT MEMBERS 308 FAMILY MEMBERS PAYING HALF DUES 156 |